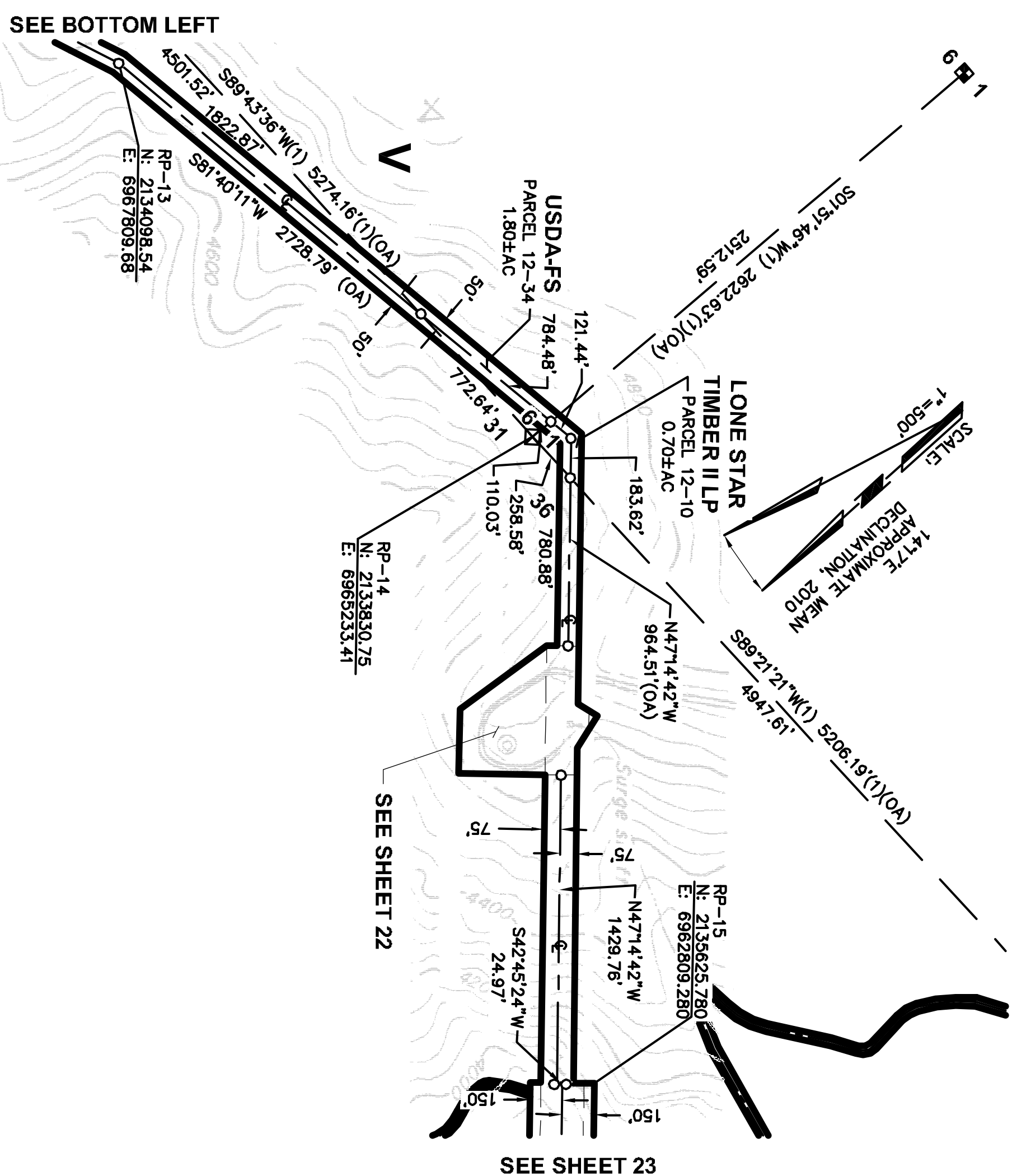
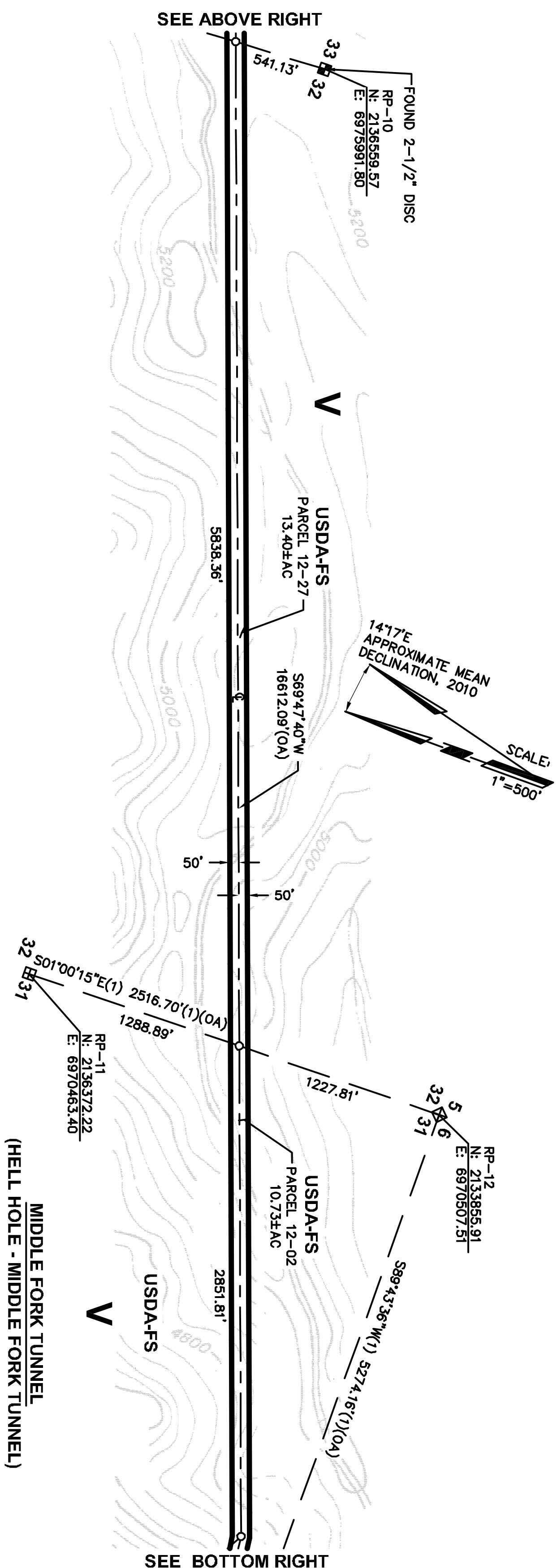
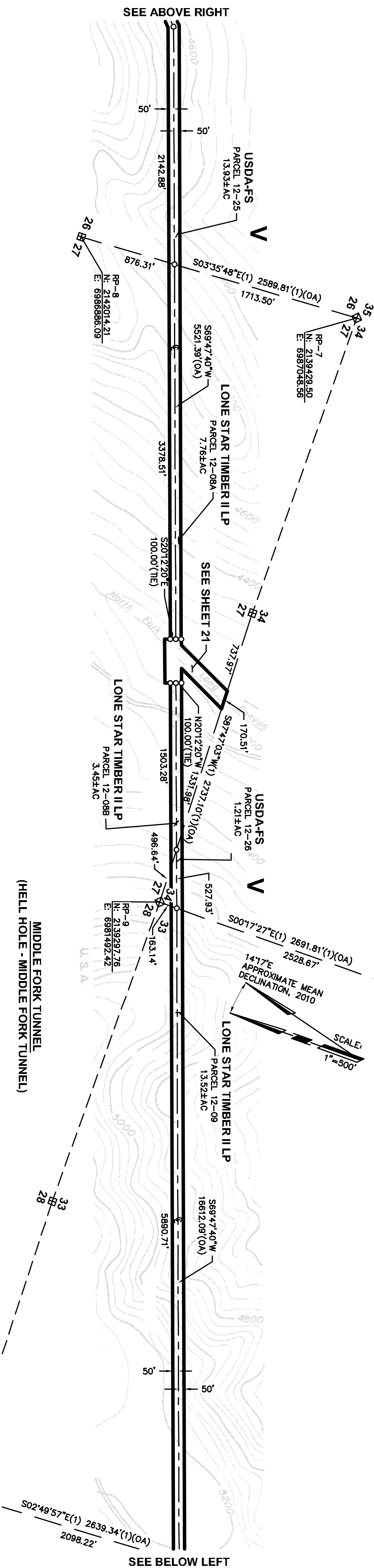
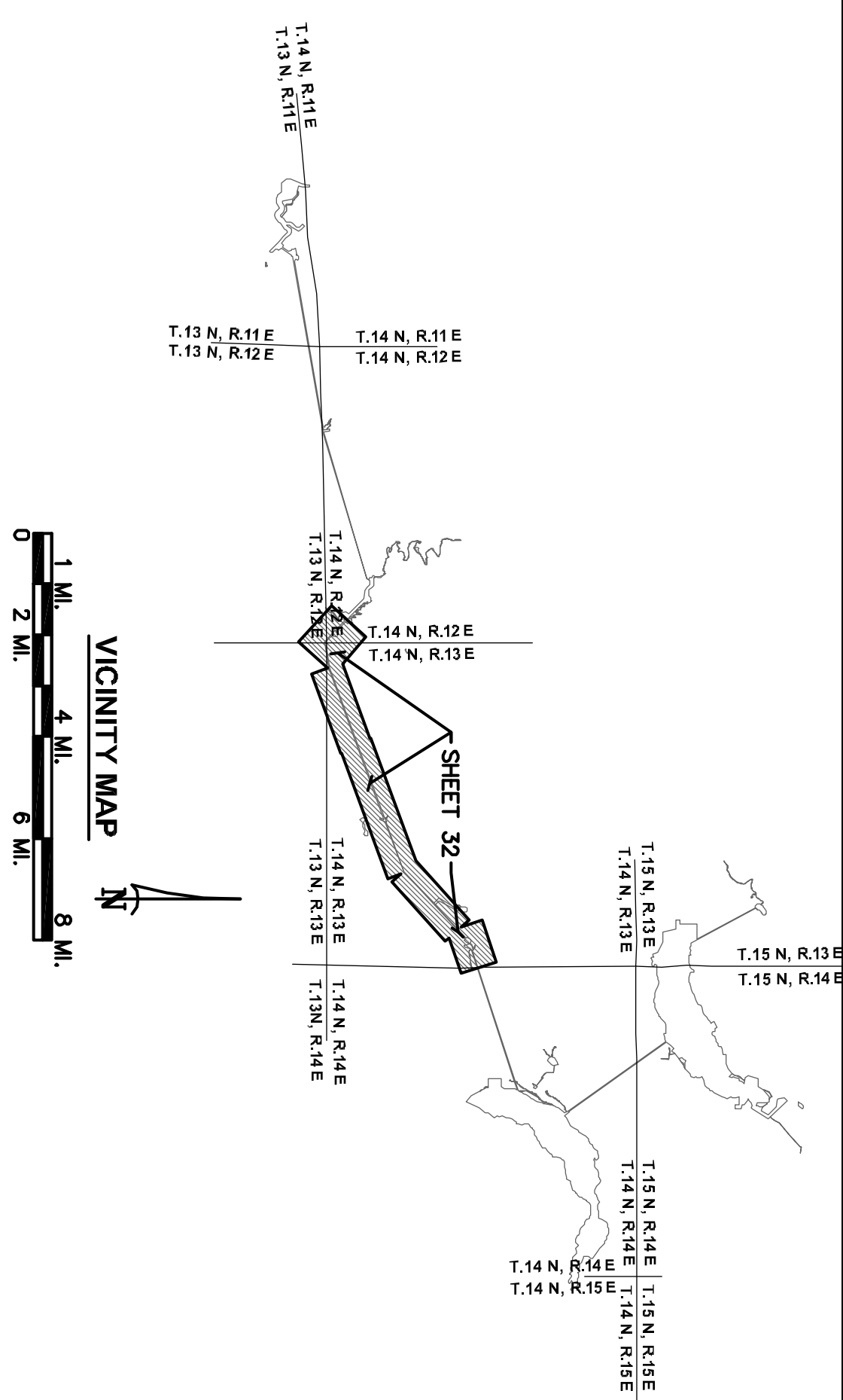
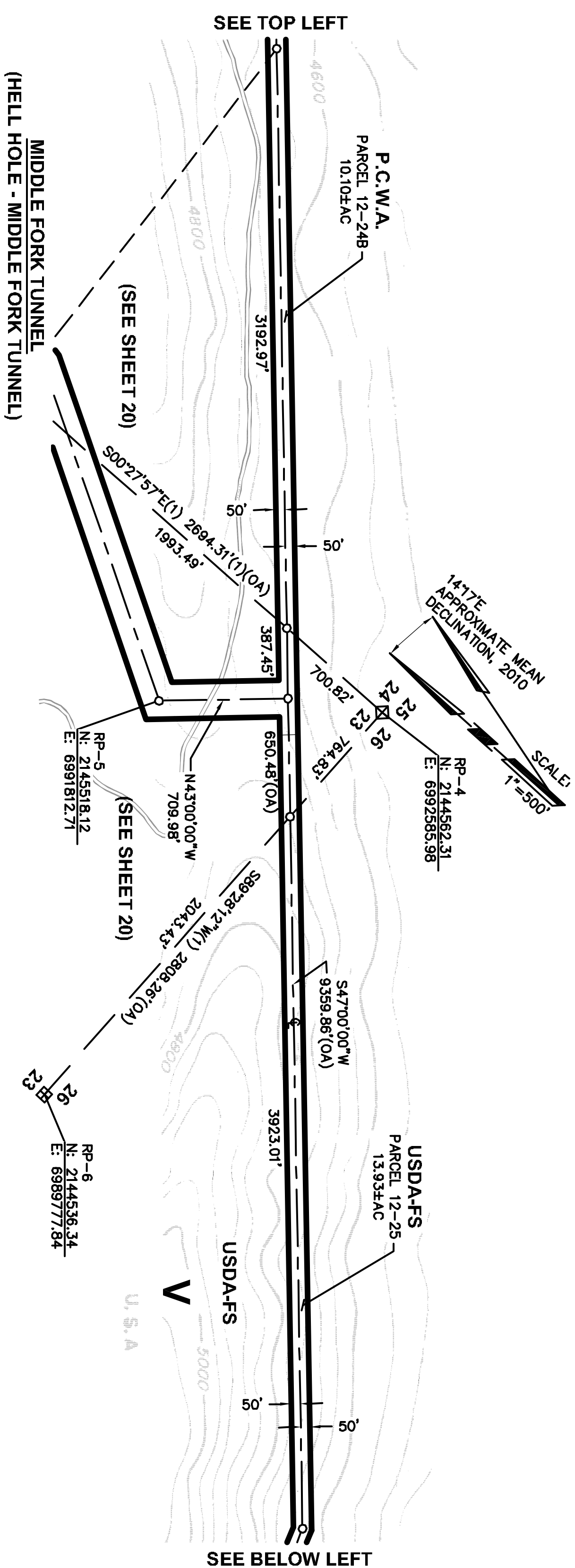
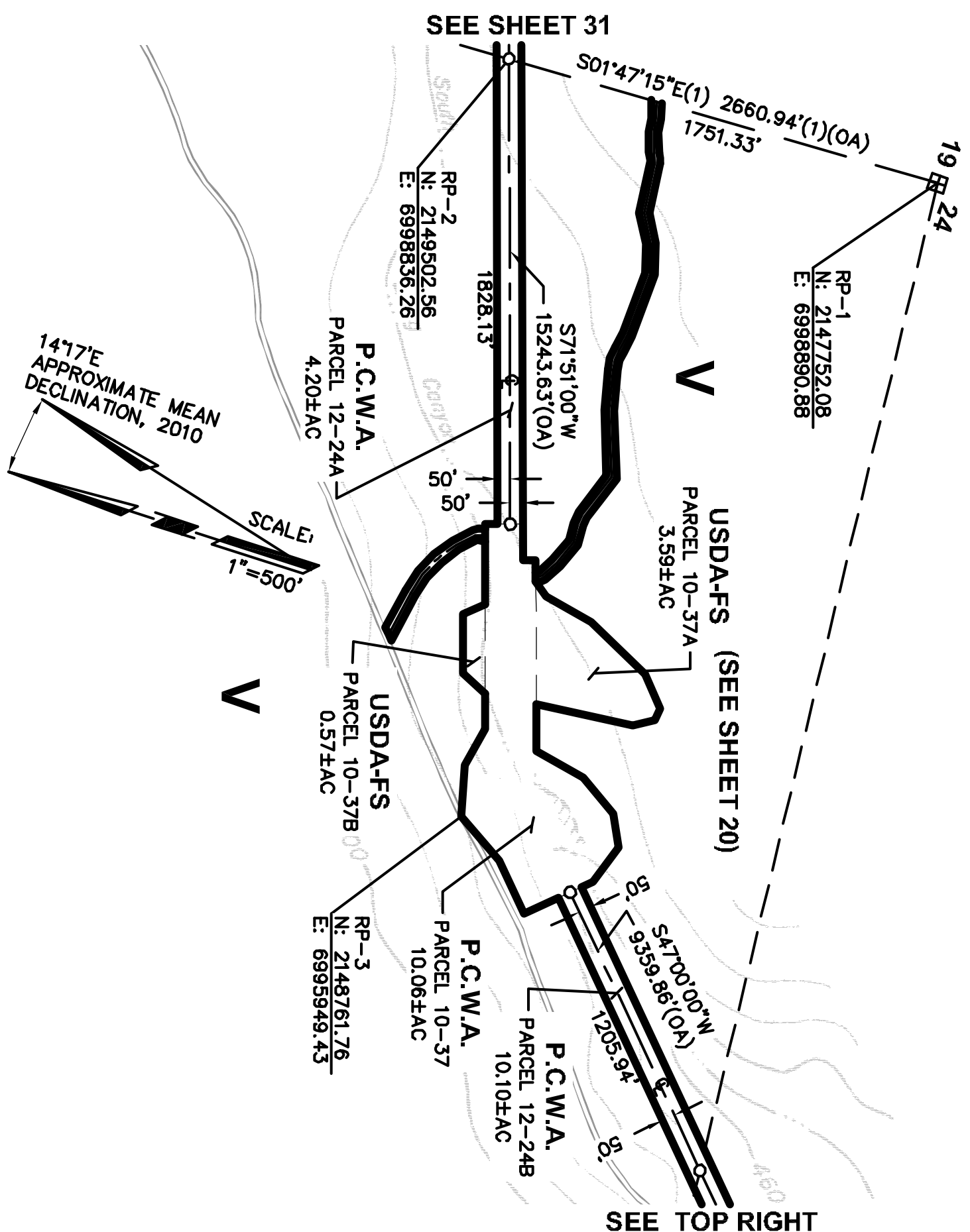


DATE _____

[illegible]

SHADED TOPOGRAPHY SHOWN HEREON PER EXHIBIT 'K', SHEET 25 & 26; MIDDLE FORK AMERICAN RIVER PROJECT; TUNNELS PROJECT AREA. REVISED OCT. 20, 1977

NAD83 CALIFORNIA STATE PLANE COORDINATE SYSTEM ZONE 11 (CCS83, ZONE 2);
U.S. SURVEY FEET

- | | |
|--|------------------------------------------|
| | PROJECT BOUNDARY |
| | RESERVOIR STORAGE STAGE |
| | TUNNEL (WITH SHAFT) |
| | SECTION LINE, ESTABLISHED |
| | SECTION LINE, PROPOSED |
| | SUBDIVISION LINE, GOVERNMENT LAND SURVEY |
| | SECTION CORNER, FOUND |
| | SECTION CORNER, FOUND |
| | 1/4 CORNER, FOUND |
| | 1/4 CORNER, RECORD |
| | COUNTY LINE |
| | U.S. FOREST BOUNDARY |
| | PROJECT BOUNDARY CORNER |
| | OVERALL DIMENSION |
| | REFERENCE POINT |
| | PUBLIC LAND |
| | ROAD |
| | BRIDGE |
| | RIVER OR PERENNIAL STREAM |
| | INTERMITTENT STREAM |
| | SPRING |
| | POND OR LAKE, WATER LEVEL, JULY 1961 |
| | TREES OR BRUSH |
| | STREAM FLOW GAGING STATION |
| | WATER SURFACE GAGING STATION |
| | CAMPGROUND |
| | BUILDING |
| | GOVERNMENT BENCH MARK |
| | BENCH MARK RELOCATION |
| | PHOTOGRAMMETRIC PRINCIPAL POINT |
| | TRIANGULATION STATION |
| | FIELD ESTABLISHED ELEVATION |
| | PHOTOGRAMMETRIC ELEVATION |
| | MINERAL RIGHTS ONLY |
| | RECORD PER 2 ROS 78 |

A PORTION OF SECTIONS 23 -28, 31-34, T14 N, R13 E, M.D.M.

PLACER COUNTY, CALIFORNIA
SCALE: 1"=500' FEBRUARY 11, 2011

PLACER COUNTY, CALIF.
SCALE: 1"=500' FEBRUARY 1964

FURNIA
RY 11, 2011

SHEET 32 OF 33